

AUBURN

SHEET I

SHEET 30

SHEET 2

SEVEN STARS

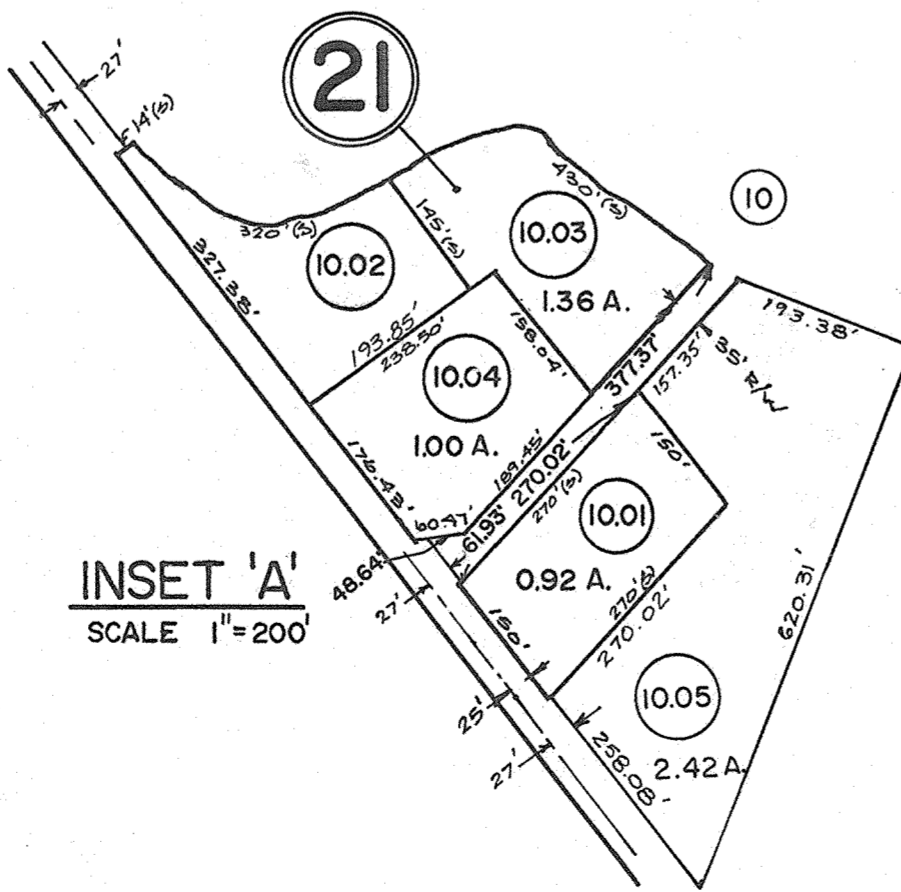
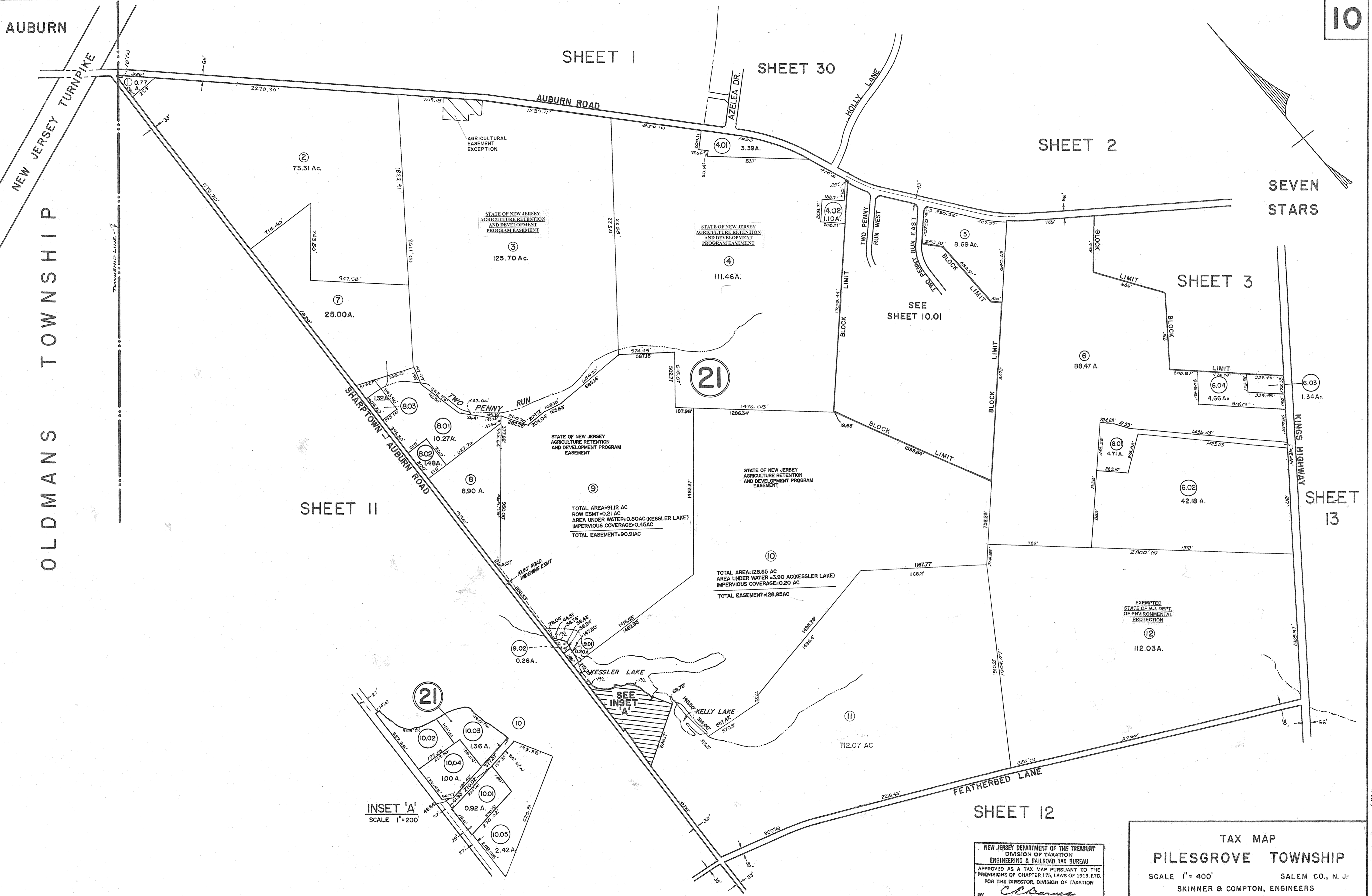
SHEET 3

SHEET 13

SHEET 12

OLDMANS TOWNSHIP

SHEET II



BLOCK 21, LOT 5.01 UNASSIGNED, ADDED TO LOT 5, 1/18/85

THIS SHEET IS A SCANNED COPY OF THE TAX MAP ORIGINALLY PREPARED BY EUGENE COMPTON OF SKINNER & COMPTON, ENGINEERS. DATED: JULY 3, 1961. THE ORIGINAL APPROVED MAP IS ON FILE IN THE OFFICE OF THE TOWNSHIP ENGINEER.

NEW JERSEY DEPARTMENT OF THE TREASURY
DIVISION OF TAXATION
ENGINEERING & RAILROAD TAX BUREAU
APPROVED AS A TAX MAP PURSUANT TO THE PROVISIONS OF CHAPTER 175, LAWS OF 1913, ETC. FOR THE DIRECTOR, DIVISION OF TAXATION
BY *E. Compton*
DATE AUG - 8 1961 SERIAL NO. 327

TAX MAP
PILESGROVE TOWNSHIP
SCALE 1" = 400' SALEM CO., N. J.
SKINNER & COMPTON, ENGINEERS
JULY 3, 1961