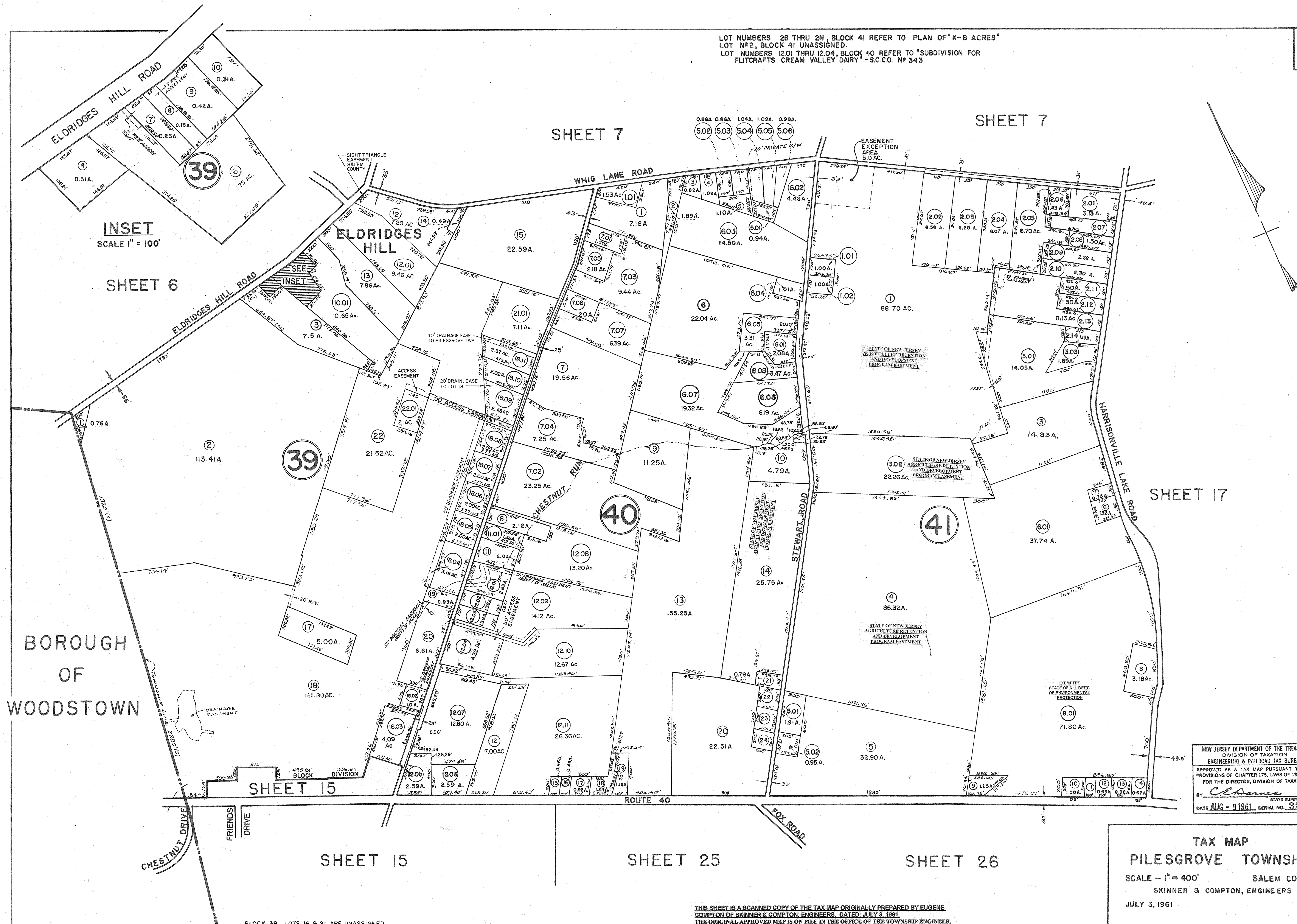


LOT NUMBERS 28 THRU 2N, BLOCK 41 REFER TO PLAN OF "K-B ACRES"  
LOT #2, BLOCK 41 UNASSIGNED.  
LOT NUMBERS 12.01 THRU 12.04, BLOCK 40 REFER TO "SUBDIVISION FOR  
FLITCRAFTS CREAM VALLEY DAIRY" - S.C.C.O. # 343



INSET  
SCALE 1" = 100'

SHEET 6

SHEET 7

SHEET 7

SHEET 17

SHEET 15

SHEET 15

SHEET 25

SHEET 26

NEW JERSEY DEPARTMENT OF THE TREASURY  
DIVISION OF TAXATION  
ENGINEERING & RAILROAD TAX BUREAU  
APPROVED AS A TAX MAP PURSUANT TO THE  
PROVISIONS OF CHAPTER 175, LAWS OF 1913, ETC.  
FOR THE DIRECTOR, DIVISION OF TAXATION  
BY *C. E. Barnes*  
STATE SUPERVISOR  
DATE AUG - 8 1961 SERIAL NO. 327

TAX MAP  
PILESGROVE TOWNSHIP  
SCALE - 1" = 400' SALEM CO., N. J.  
SKINNER & COMPTON, ENGINEERS  
JULY 3, 1961

THIS SHEET IS A SCANNED COPY OF THE TAX MAP ORIGINALLY PREPARED BY EUGENE  
COMPTON OF SKINNER & COMPTON, ENGINEERS, DATED JULY 3, 1961.  
THE ORIGINAL APPROVED MAP IS ON FILE IN THE OFFICE OF THE TOWNSHIP ENGINEER.

BLOCK 39, LOTS 16 & 21 ARE UNASSIGNED