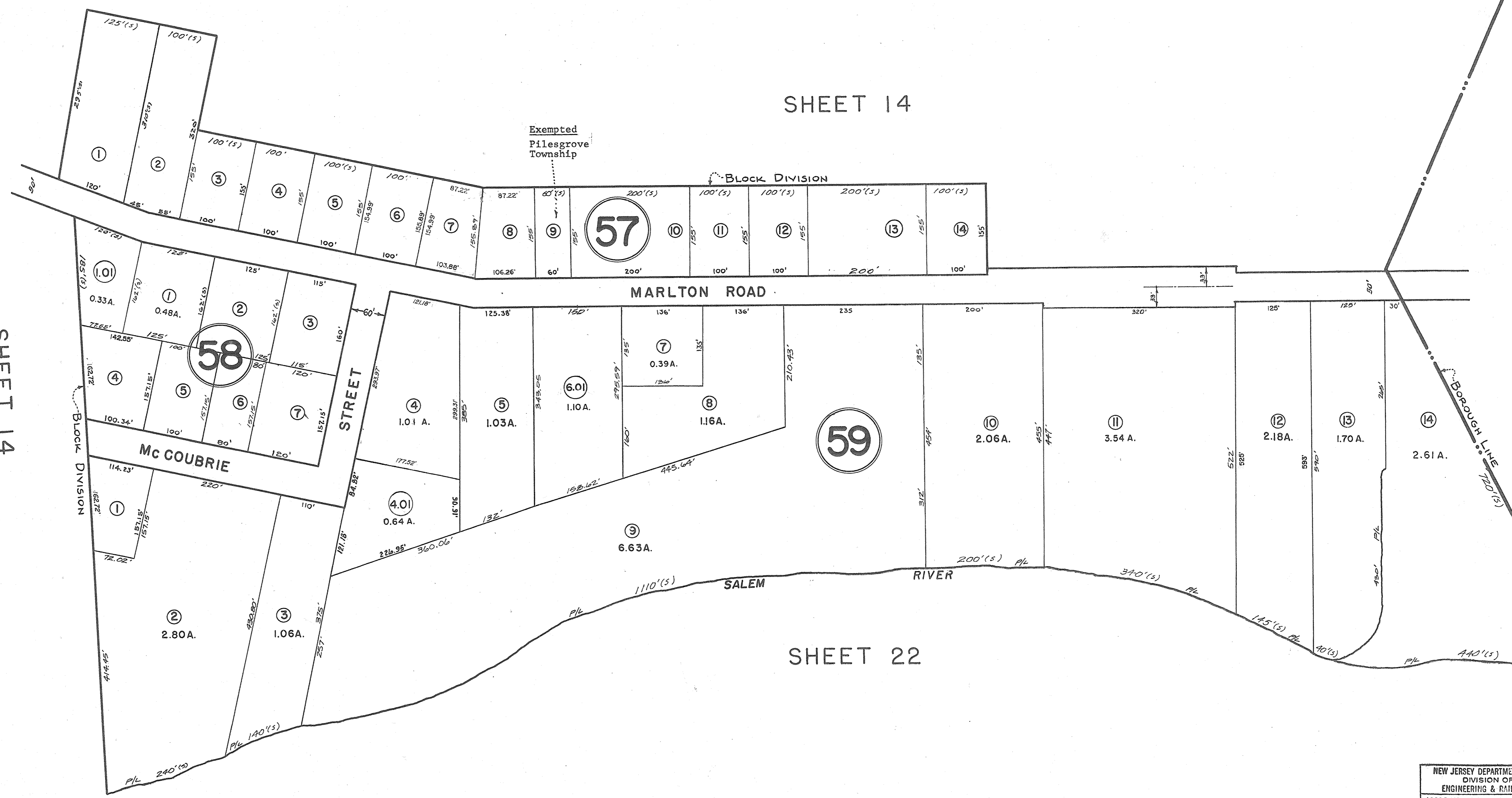


SHEET 14

SHEET 14

SHEET 22

BOROUGH OF WOODSTOWN



Block 59, Lot 6 unassigned combined w/ Lot 6.01 - 11/28/01

NEW JERSEY DEPARTMENT OF THE TREASURY  
 DIVISION OF TAXATION  
 ENGINEERING & RAILROAD TAX BUREAU  
 APPROVED AS A TAX MAP PURSUANT TO THE  
 PROVISIONS OF CHAPTER 175, LAWS OF 1913, ETC.  
 FOR THE DIRECTOR, DIVISION OF TAXATION  
 BY *C. J. Barnes* STATE SUPERVISOR  
 DATE AUG - 8 1961 SERIAL NO. 327

TAX MAP  
 PILESGROVE TOWNSHIP  
 SCALE 1" = 100' SALEM CO., N.J.  
 SKINNER & COMPTON, ENGINEERS  
 JULY 3, 1961

THIS SHEET IS A SCANNED COPY OF THE TAX MAP ORIGINALLY PREPARED BY EUGENE  
 COMPTON OF SKINNER & COMPTON, ENGINEERS, DATED: JULY 3, 1961.  
 THE ORIGINAL APPROVED MAP IS ON FILE IN THE OFFICE OF THE TOWNSHIP ENGINEER.